

Fishers Lane, London, W4 1YB

£299,950

**WHITMAN & CO.**

SALES · LETTINGS · COMMERCIAL



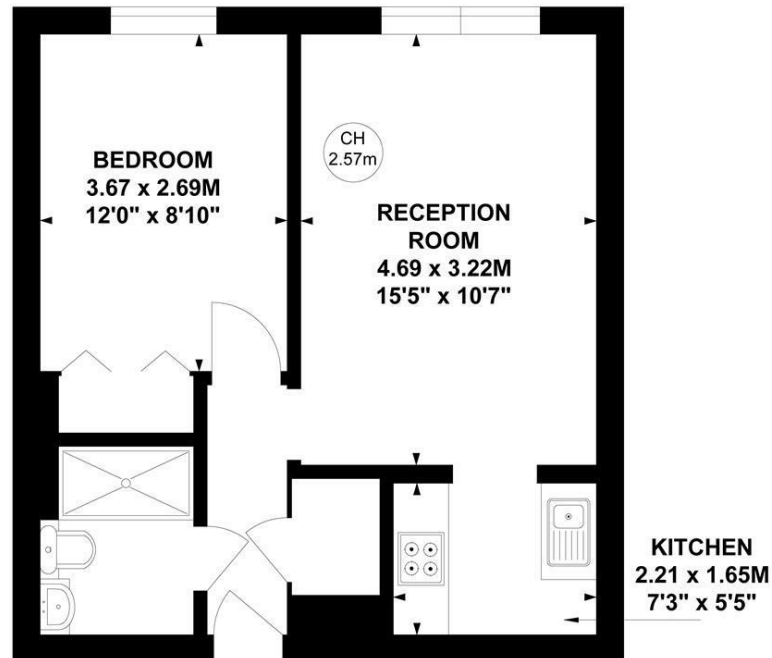
- Views of the beautifully maintained communal garden
- 15'5" Reception room
- Central Chiswick location
- Residents lounge and house manager
- Lift access
- No onward chain

Tenure - Leasehold  
 Lease Length - 58 years remaining  
 Ground Rent - £511 pa  
 Service Charge - £3,000 pa  
 Local Authority - Hounslow  
 Council Tax - Band D

## Homecross House, W4

Approximate gross internal area  
 39.63 sq m / 427 sq ft

Key :  
 CH - Ceiling Height



### Third Floor

Not to scale, for guidance only and must not be relied upon as a statement of fact.  
 All measurements and areas are approximate only

## THE PROPERTY

A bright and spacious one-bedroom retirement apartment set within this sought-after central Chiswick development with Chiswick Common to the rear of the development whilst the front entrance on Fisher's Lane is just moments from the main high road with its array of shops, cafes and restaurants. This third floor (with lift) apartment comprises a spacious double bedroom, 15'5" reception room, fitted kitchen, shower room, and views of the beautifully maintained communal garden. The development benefits from residents living room and gardens, house manager, laundry room, and residents parking. Local transport links include Turnham Green tube station, numerous local bus routes with convenient vehicular access via the A4/M4 to Central London, Heathrow and the west. No onward chain.

## SITUATION



5-7 Turnham Green Terrace, Chiswick, London, W4 1RG  
 Tel 020 8747 8800

E-mail [sales@whitmanandco.com](mailto:sales@whitmanandco.com)  
 Website [www.whitmanandco.com](http://www.whitmanandco.com)